

Mass Open Space Network

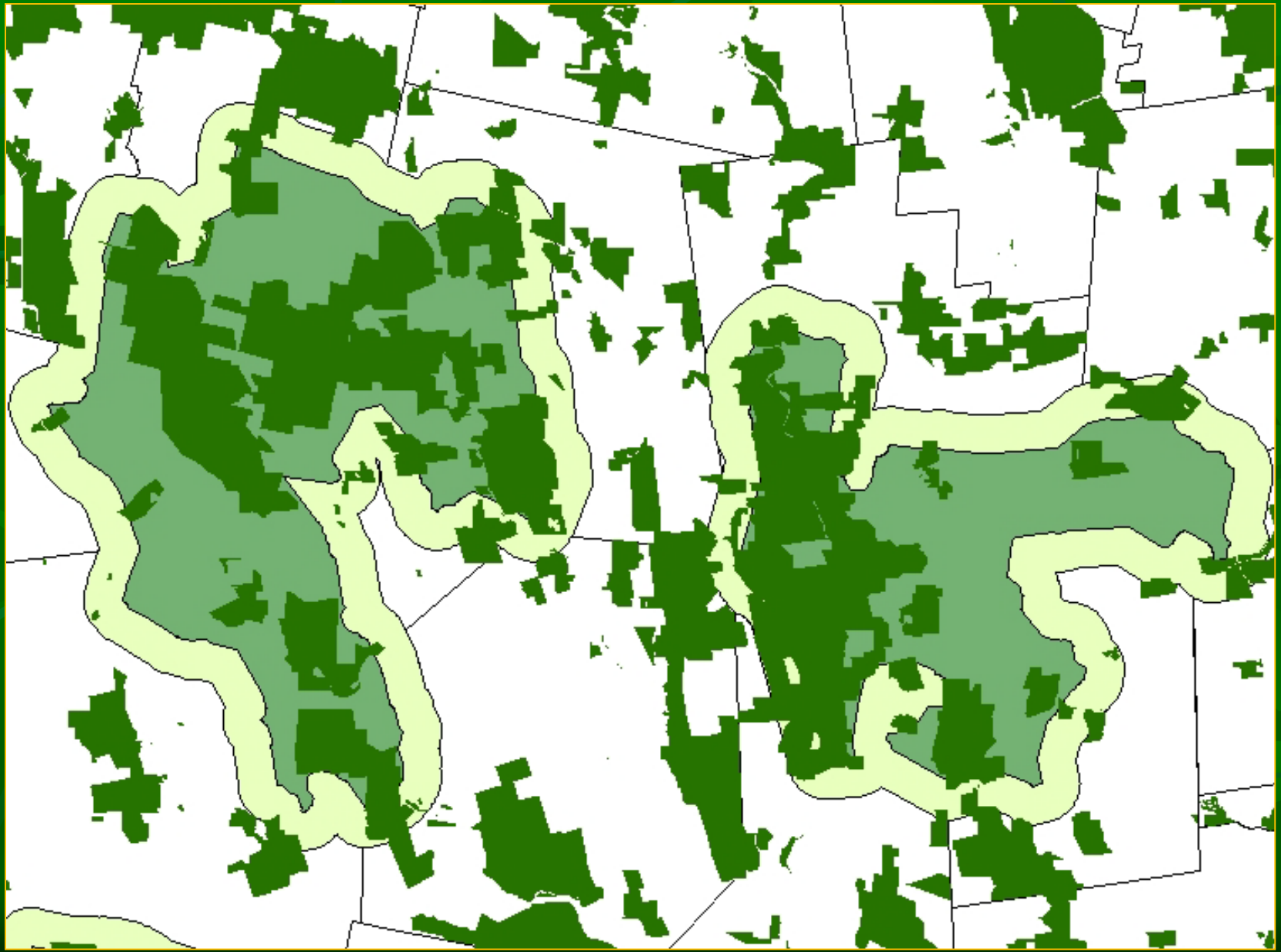
The Ecological Context of Your Community



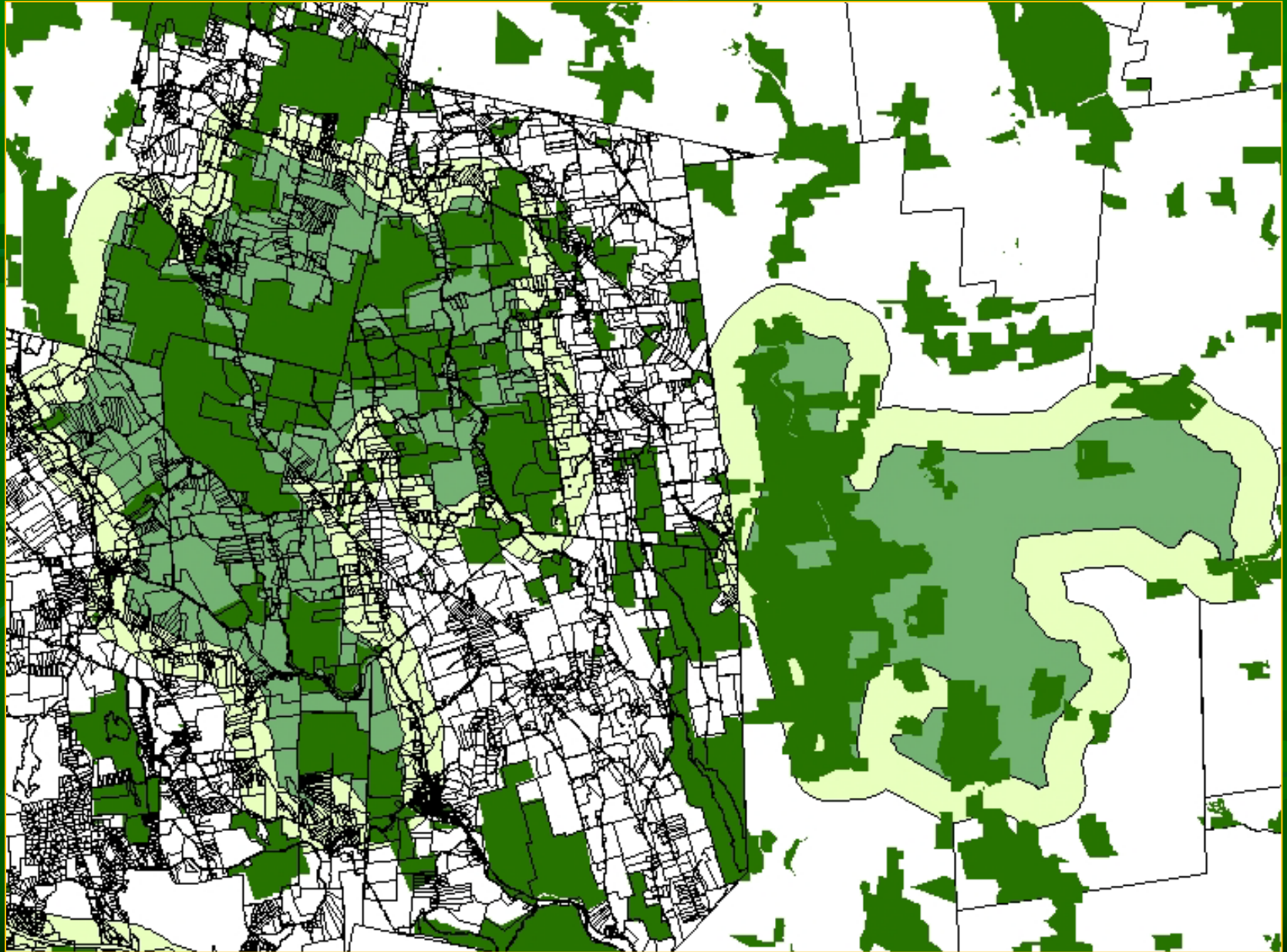
Paul Catanzaro

*Associate Professor
State Extension Forester*

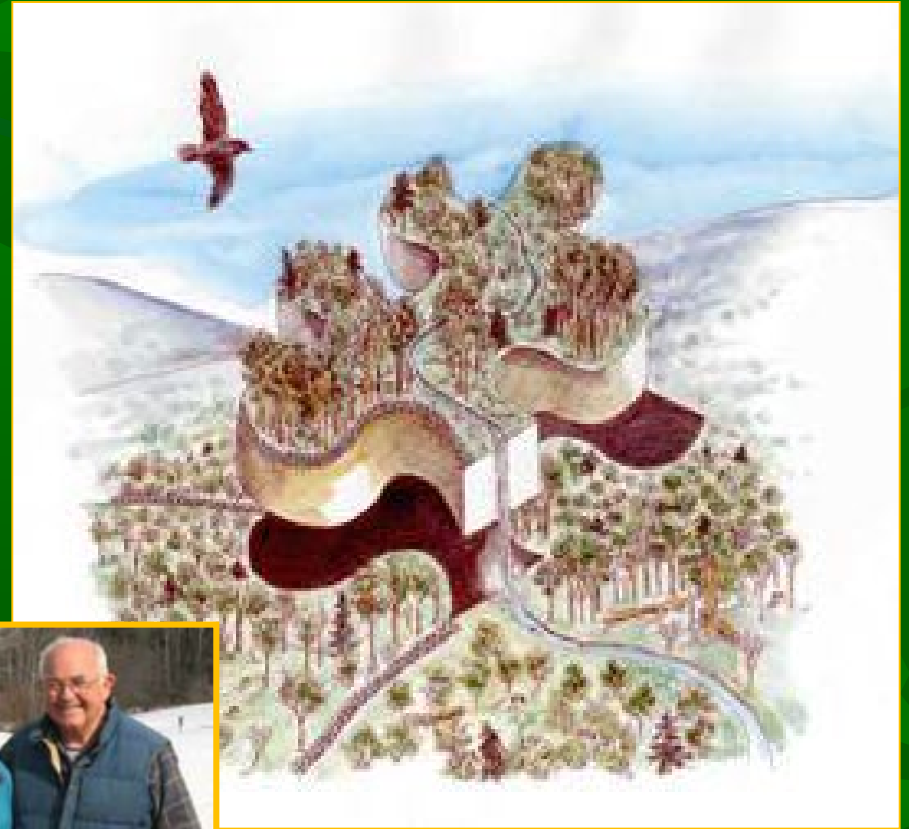
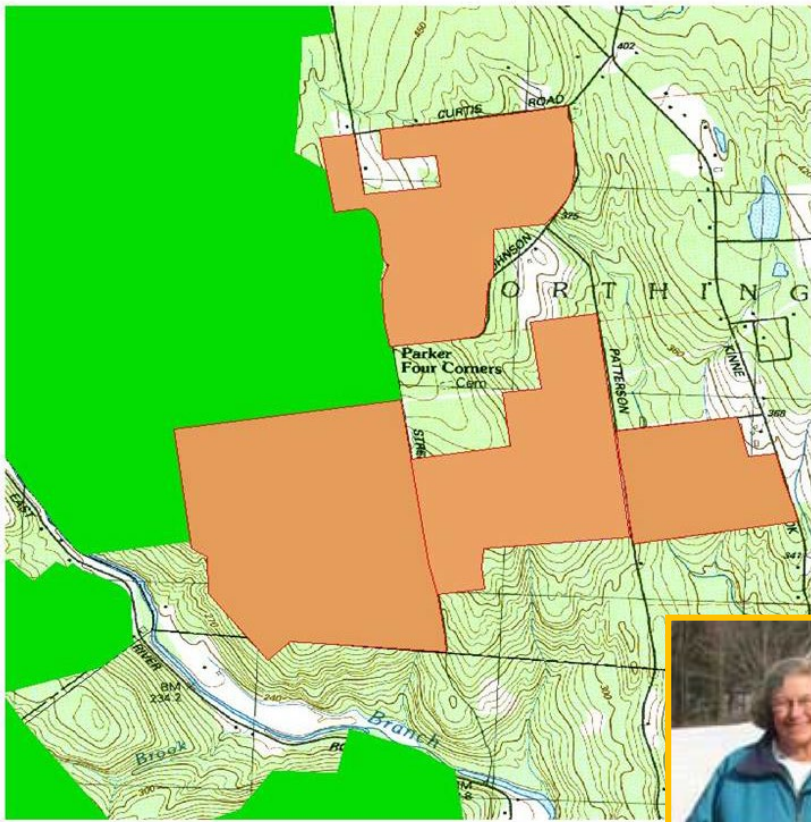
Conservation Priorities



Conservation Reality



Informing Landowner Decisions



Statewide Land Trusts &
State Conservation Agencies

Regional Land Trusts

**Local Land Trusts,
OSC, Community Members**

Regional
Conservation
Partnerships
(RCPs)



Capacity &
Expertise

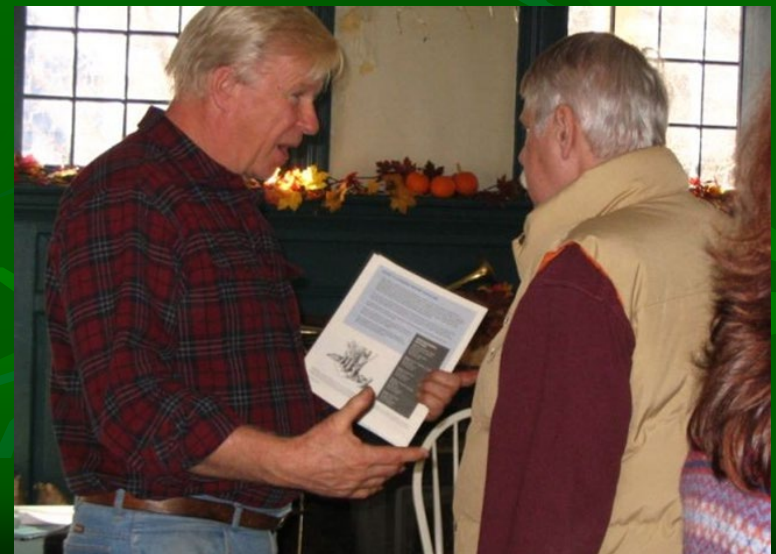
Local
Knowledge &
Relationships

Your Unique Role

Proactive & Reactive

- Friend/Neighbor
- First Responder
- Trusted Information
- Connector
- Convener
- Facilitator
- Supporter

No one else can do this!!!!



Broad Conservation Goals

- Clean water
- Wildlife habitat
- Climate change mitigation
- Recreational opportunities
- Forest/Farm Products
- Human Health



Photo Credit: Rob Warren

The missions of conservation organization vary.

Land Cover

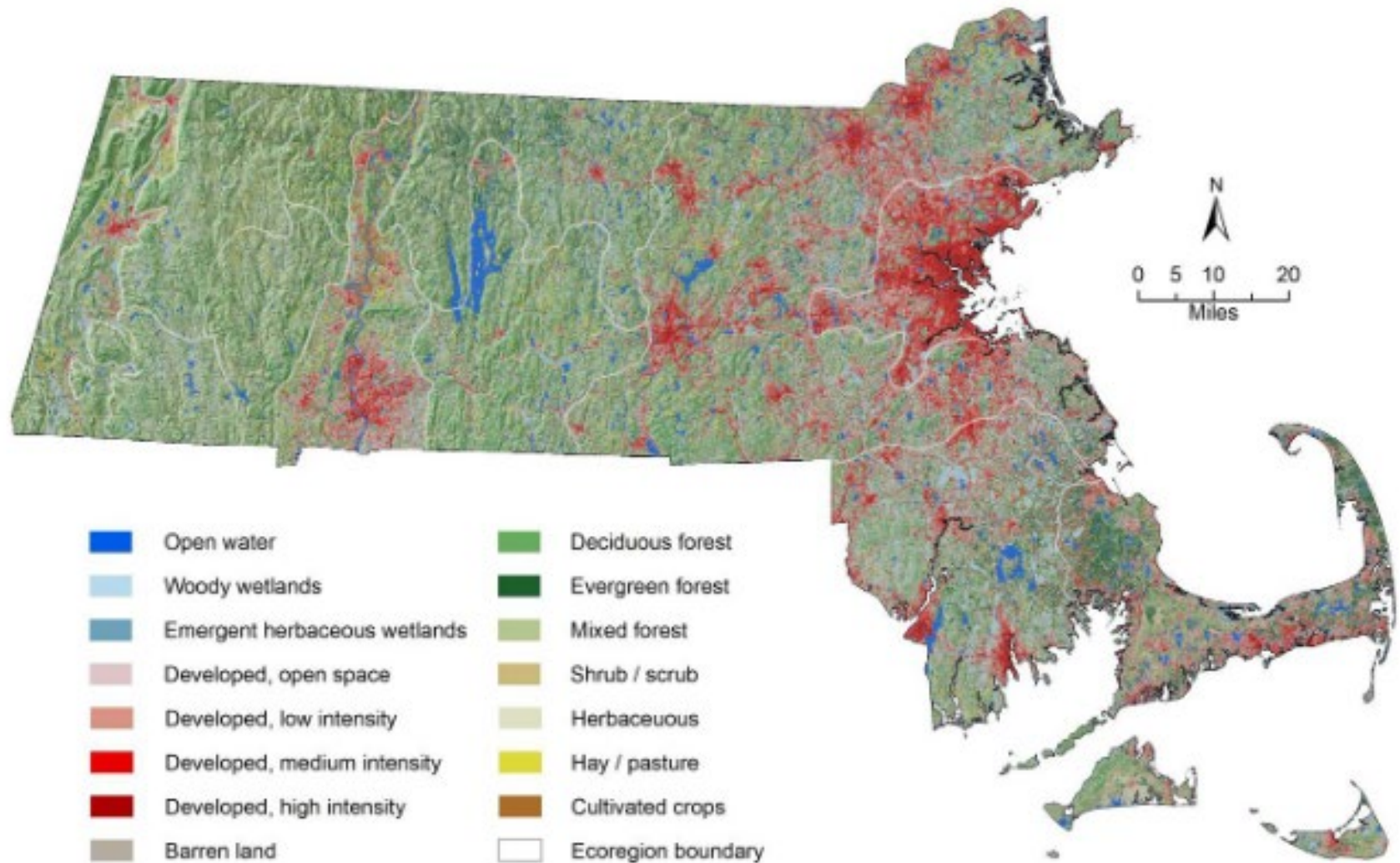


Figure 1.4. Map showing the distribution of land development and land cover across the state (data: NLCD 2016).

Rate of Development

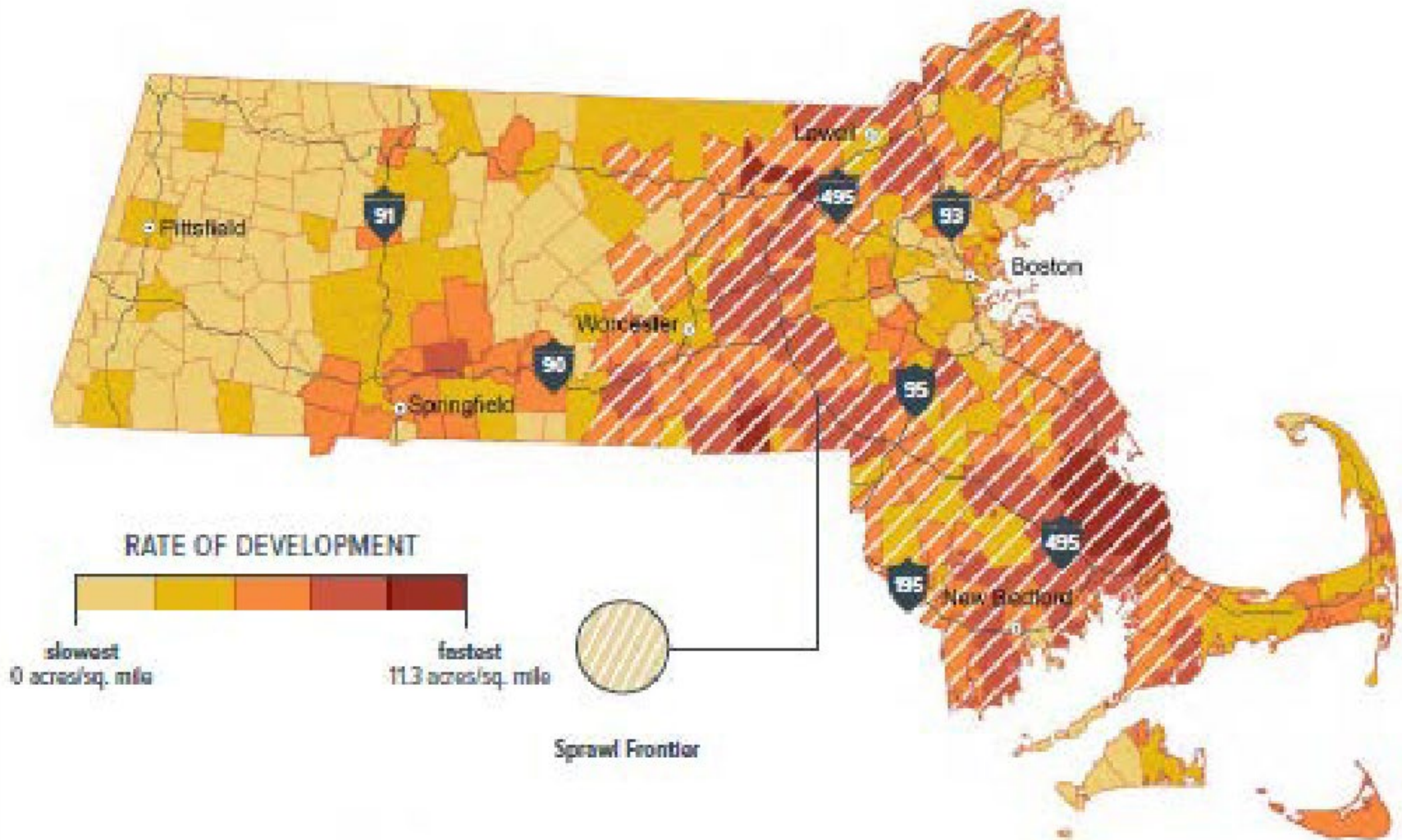
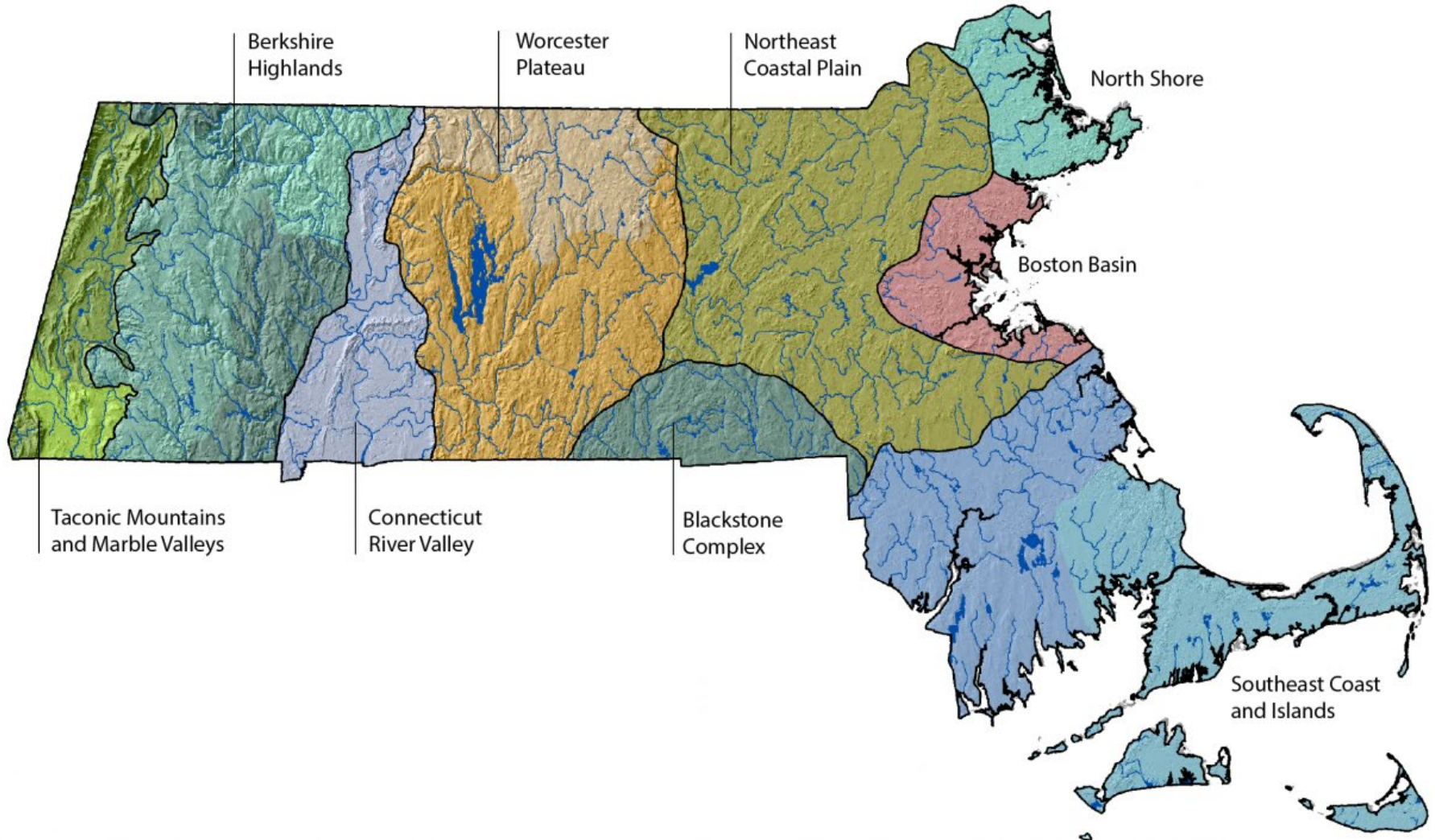


Figure 1.21. Recent land development trends (Ricci et al. 2020).

Ecoregions



Forest Types

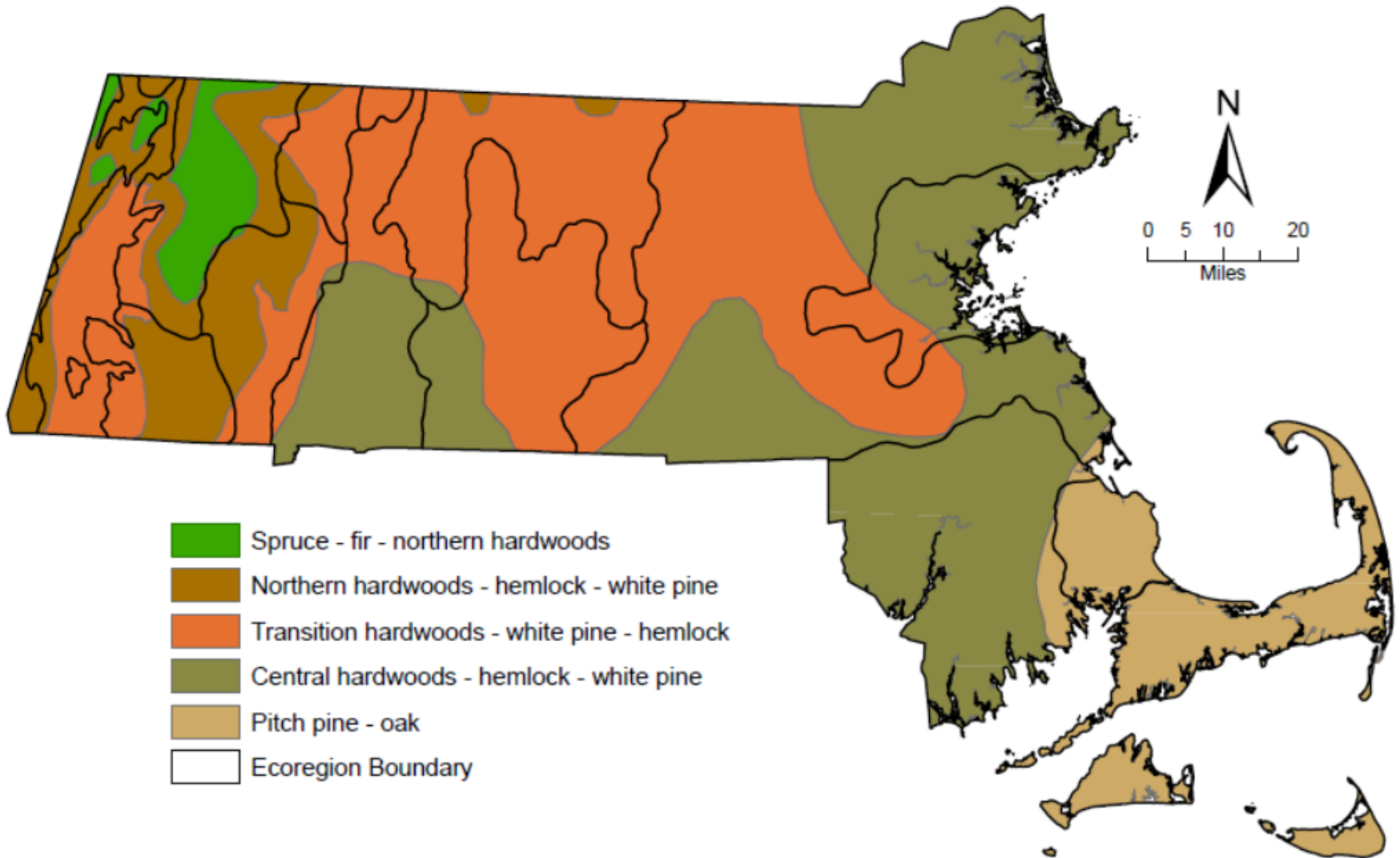
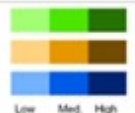
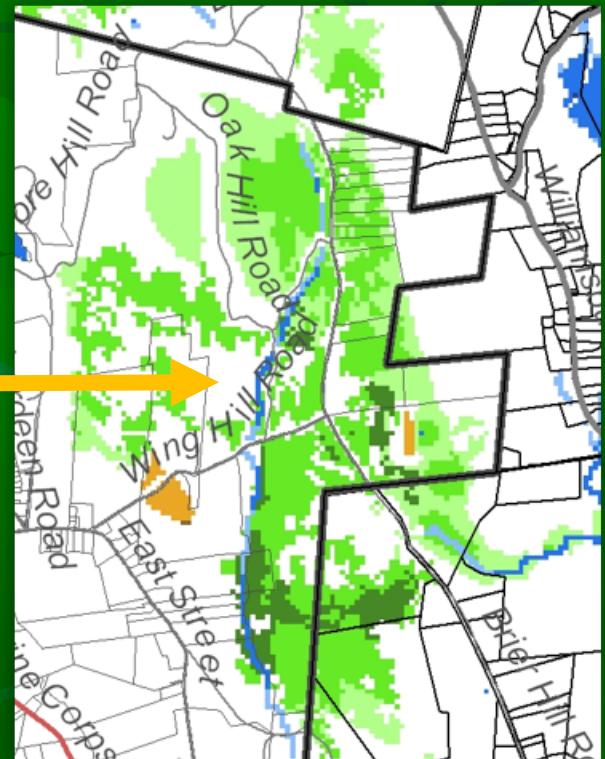
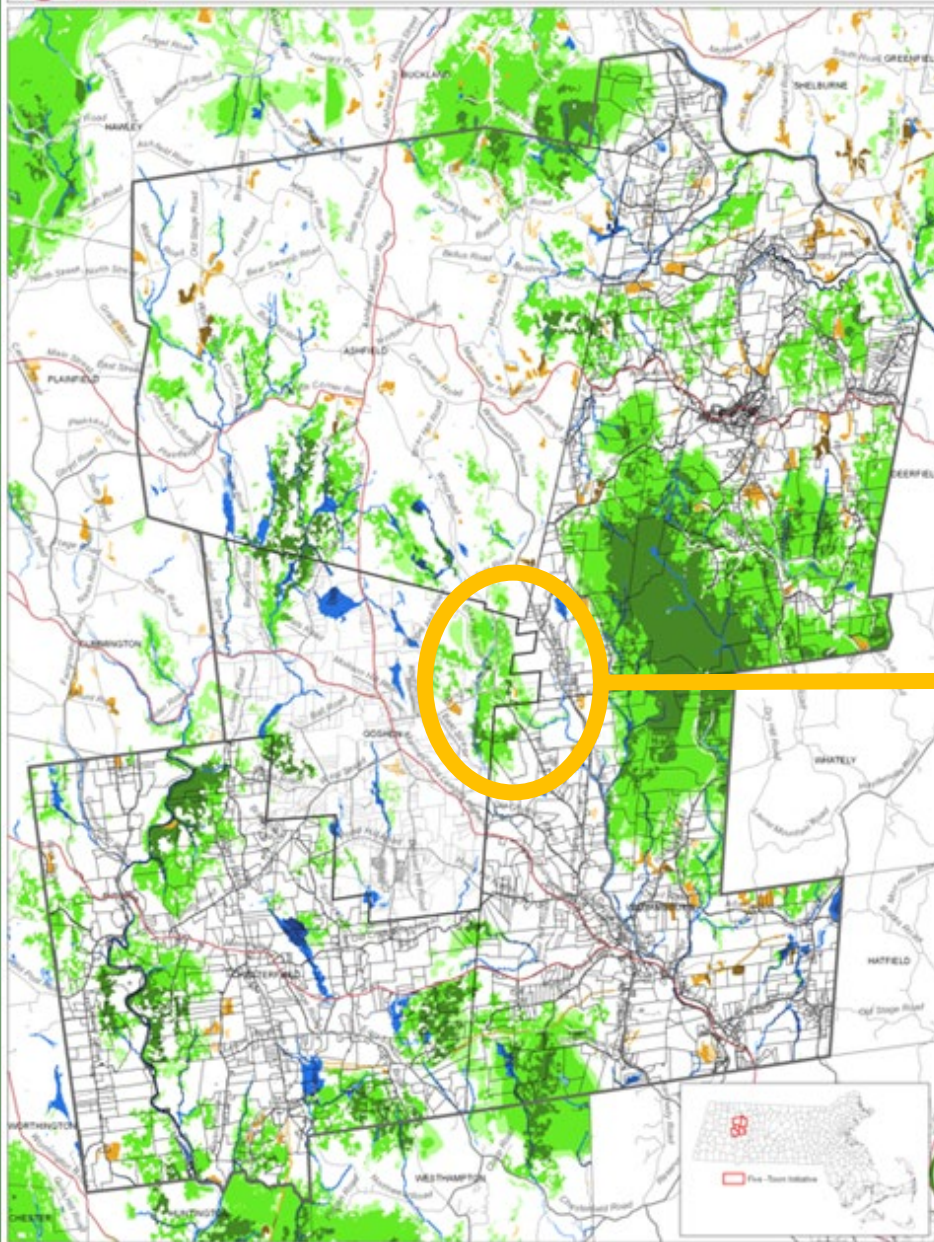


Figure 1.7. Massachusetts forest types (modified from Westveld et al. 1956).

Community Context

- Unique set of natural resources
- Unique set of goals to address your community's needs



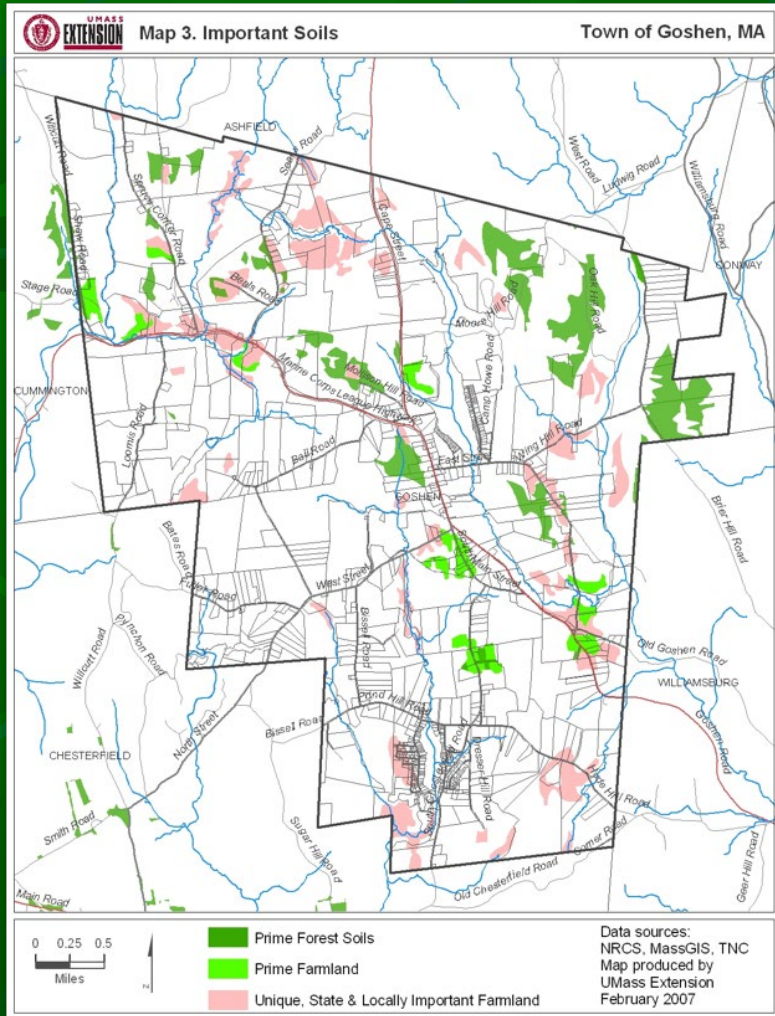


Forests
Non-forested Uplands*
Wetlands & Aquatic
IEI - Top 50%

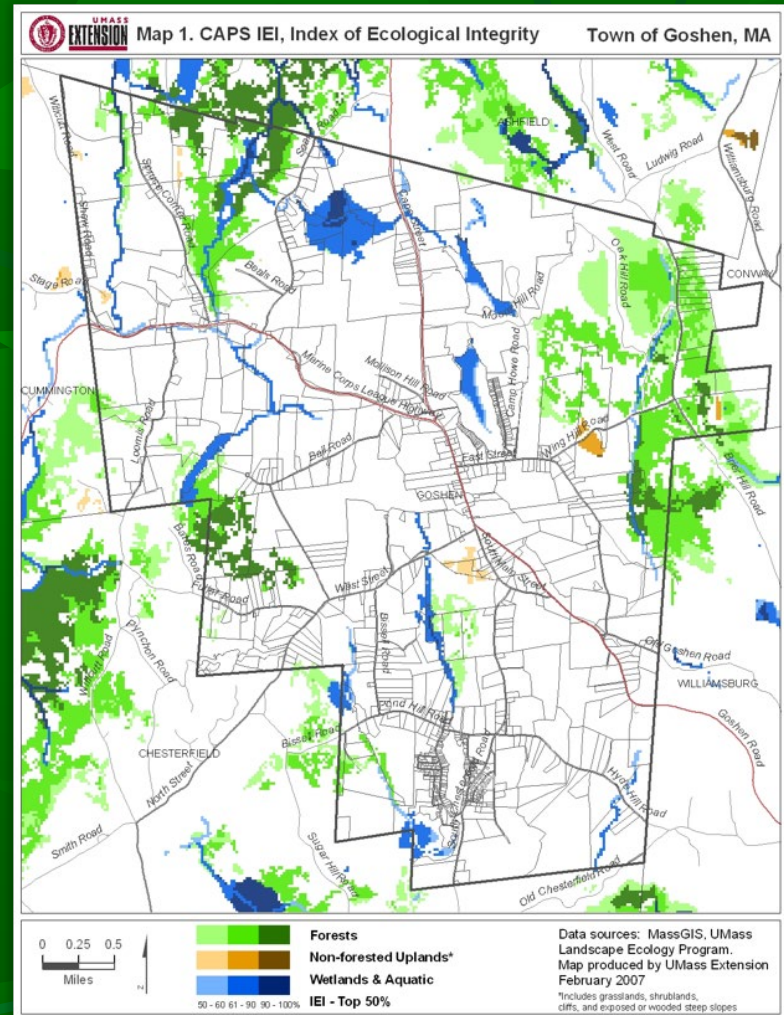
Data sources: MassGIS, UMass Landscape Ecology Program.
 Map produced by UMass Extension
 February 2007

*Includes grasslands, shrublands, cliffs, and exposed or wooded steep slopes

Different Priorities, Different Parcels



Prime Farm and forest Soil



Conservation Assessment and Prioritization (CAPS)

Land Conservation Mapping

- Biomap2
- Designing Sustainable Landscapes
- MAPPR: Mapping and Prioritizing Parcels for Resilience
- MA Climate Action Tool
- MassCaps: Con. Assessment and Prioritization Tool
- Nature's Network
- New England Landscape Futures (NELF) Explorer
- Resilient and Connected Landscapes

Land Conservation Tools

UMass – Scott Jackson, Melissa Ocana, Lee Halasz



Explore the Tools

The below dropdown filters can help you explore and identify the land conservation tools most appropriate for different conservation tasks and phases:

Land (open space) protection ▾

- All Conservation Phases - ▾



BioMap2

Motivation, Assessment, Plan

BioMap2 is designed to guide strategic biodiversity conservation by focusing land protection and stewardship on the areas that are most critical for ensuring the long-term



DSL - Designing Sustainable Landscapes

Assessment

Designing Sustainable Landscapes (DSL) provides data and assessments for strategic habitat conservation, by assessing the ecological integrity



MAPPR - Mapping and Prioritizing Parcels for Resilience

Plan, Action

Mapping & Prioritizing Parcels for Resilience (MAPPR) is a decision support tool informing parcel based land conservation prioritization

AT A GLANCE

Massachusetts Land Conservation Tools



Use this 'cheat sheet' to learn about information sources and tools available to inform land conservation (protection and stewardship) decisions in Massachusetts. Please visit the **Land Conservation Tools** website for more details and help choosing the resource(s) best suited to your conservation work.

PRODUCT EASE OF USE
Ease of Use considers the time, technology and local knowledge that is required to use a tool product. Look for these symbols to see how a tool may match your needs.

Easier More advanced

Adaptation Workbook

SUMMARY
Identifies on-ground management actions addressing climate change

DEVELOPERS



FOREST CONSERVATION GOALS
• Climate adaptation
• Forest productivity

PRODUCT
 Report

GEOGRAPHIC SCOPE
Northeast



NOTES
Requires site-based knowledge of your project area

adaptationworkbook.org

BioMap2

SUMMARY
Blueprint for strategic biodiversity conservation

DEVELOPERS



FOREST CONSERVATION GOALS
• Rare species & communities
• Landscape-scale

PRODUCTS
 Interactive map
 GIS data

GEOGRAPHIC SCOPE
Massachusetts



NOTES
Based on rare species, exemplary communities, and landscape-scale modeling

mass.gov/service-details/biomap2

DSL (Designing Sustainable Landscapes)

SUMMARY
Landscape-scale modeling to inform strategic habitat conservation

DEVELOPERS

UMassAmherst

FOREST CONSERVATION GOALS
• Landscape-scale

PRODUCT
 GIS data

GEOGRAPHIC SCOPE
Northeast



NOTES
DSL was used to create Nature's Network

umasscaps.org/data_maps/dsl.html

MAPPR (Mapping & Prioritizing Parcels for Resilience)

SUMMARY
Decision-support tool identifying parcel-based conservation priorities

DEVELOPERS



FOREST CONSERVATION GOALS
• Rare species & communities
• Individual parcels

PRODUCT
 Interactive map

GEOGRAPHIC SCOPE
Massachusetts



NOTES
Uses data from BioMap2, DSL, and an early version of RCL

massaudubon.org/mappr

Ecological Diversity

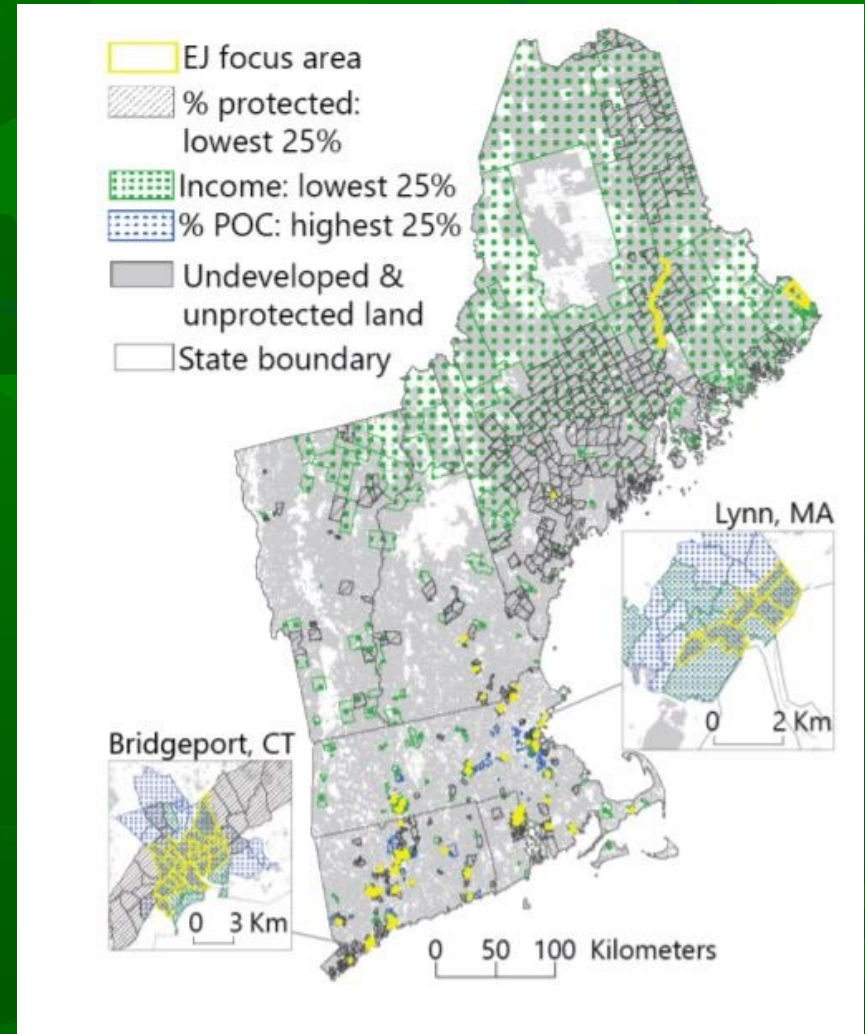
- Meet the diverse interests of your community
- Engage new people
- Access new funding



Social Diversity

- Meet the needs of your whole community

February 10:
Social Context of
Your Community



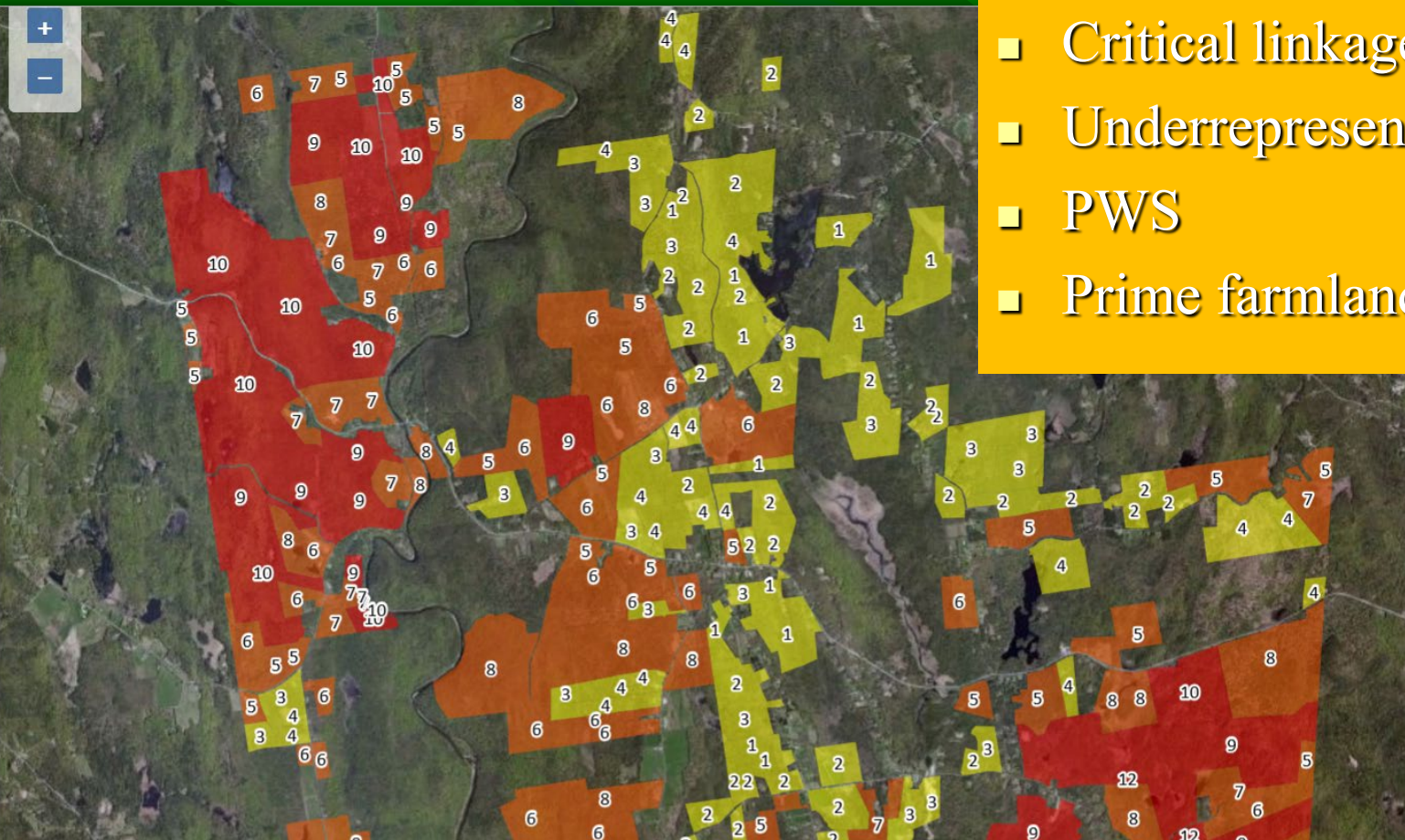
This environmental justice map was created by researchers at Amherst College, Harvard Forest, and StarLuna Consulting

MAPPR

Mapping and Prioritizing Parcels for Resiliency

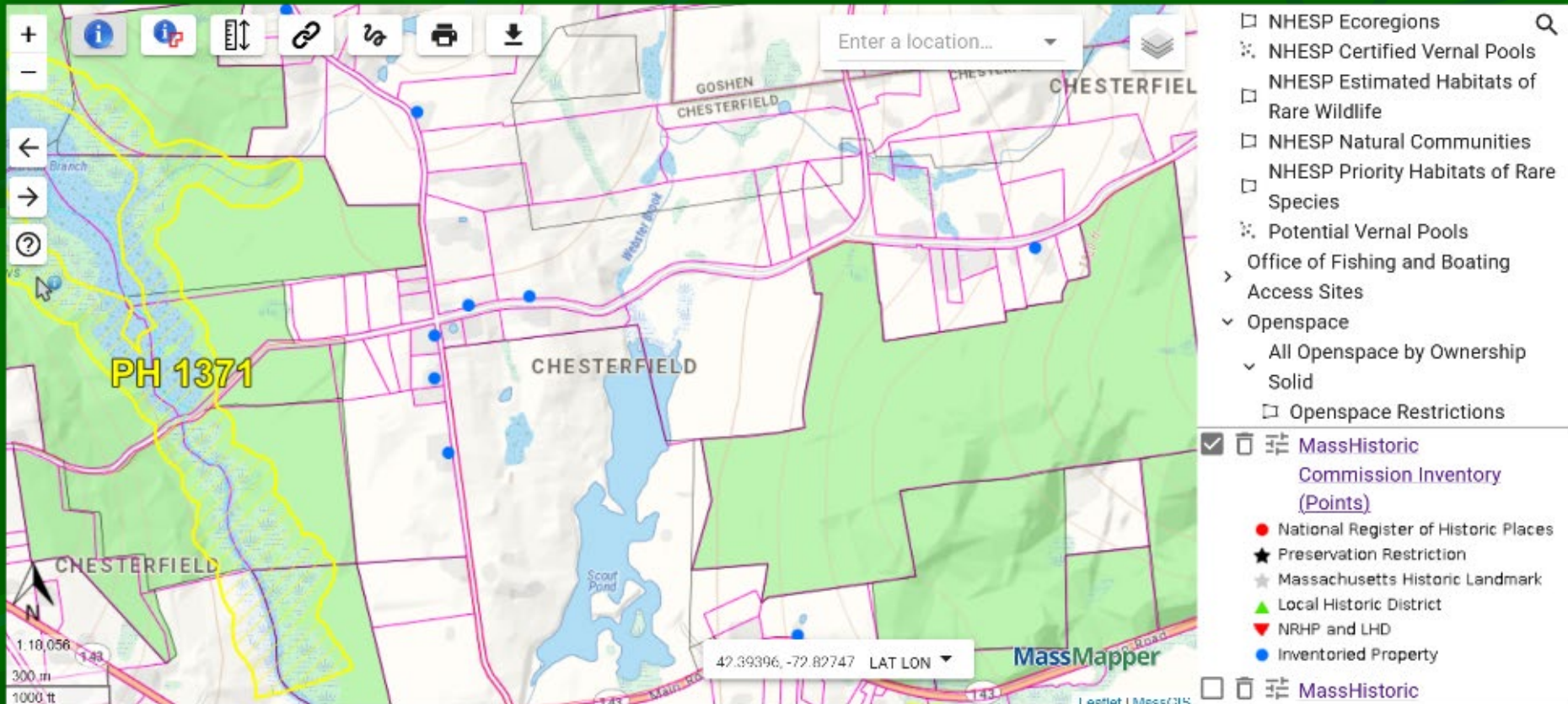


- Biomap
- Resiliency
- Critical linkages
- Underrepresented settings
- PWS
- Prime farmland



MassMapper

(formerly OLIVER)



More Mass Open Space Network Trainings Coming Soon!

Sharing Your Priorities

- Share your community's priorities
- Develop relationships
- Access expertise and information
- Engage in partnerships!



Resources



Open Space Handbook

A Guide to Community Conservation in Massachusetts



www.masswoods.org/OSC

Open Space Committees

www.masswoods.org/osc

MassWoods *Learn your options. Find local contacts.*

[FAQ](#) | [About](#) | [Contact](#)



[Find a Professional](#)

[Future of My Land](#)

[Caring for Your Land](#)

[Landowner Programs](#)

[Monthly Update](#)

[Stumpage](#)

Open Space Committees

Open Space Committees

As a trusted, local source of information, Open Space Committees (OSCs) stand in an excellent position to help increase the pace of land protection in their community. In fact, perhaps the most effective role for OSCs may be helping their neighbors make informed decisions about the future of their land by getting them timely information and contacts when they are making decisions. This role complements the work of land trusts and state conservation agencies who can then provide the necessary expertise to help interested landowners conserve their land.

On this page:

- [Upcoming Events](#)
- [Open Space Handbook](#)
- [Economic Contributions of Conserved Forests](#)
- [Grant Opportunities](#)

Future of My Land

[Deciding the Future of My Land](#)

[Legacy Planning Tool](#)

[Estate Planning Professionals](#)

[Family Communication](#)

[Land Conservation Options](#)

[Case Studies of Conservation](#)

[Community Conservation](#)

[Webinar Series](#)

Open Space Committees

Related Links




[Understanding Land Ownership and](#)

Find a Professional Tool

www.masswoods.org/professionals

MassWoods Learn your options. Find local contacts. [FAQ](#)

 [Find a Professional](#) [Future of My Land](#) [Caring for Your Land](#) [Landowner Programs](#) [Monthly Update](#) [Stumpage](#)

Find a Professional

Chesterfield

Contact Information for Resources in Chesterfield

Land Trust

A land trust is a non-profit, non-governmental organization that actively works to conserve land as a part of its mission.

Hilltown Land Trust
332 Bullitt Road
Ashfield, MA 01330
Phone: (413) 628-4485 ext 2
Email: ContactUs@hilltown-land-trust.org
Website: <http://www.hilltown-land-trust.org>

Massachusetts Audubon Society
208 South Great Road

Public Conservation Agency

A state government agency who conserves land as a part of its mission.

Jennifer Howard
MA Dept of Conservation and Recreation
136 Damon Rd.
Northampton, MA 01060
Phone: (413) 586-8706 ext. 18
Email: jennifer.howard@state.ma.us
Website: <http://www.mass.gov/eea/agencies/dcr/>

Peter Milanesi
Dept. of Fish and Game - Division of Fisheries and Wildlife
88 Old Windsor Road
Dalton, MA 01226
Phone: 413-684-1646
Email: Pete.Milanesi@state.ma.us
Website: <http://www.mass.gov/eea/agencies/dfg/>

Estate Planning Attorney

Lawyers who specialize in estate planning, conservation law, and/or land use.

Harold Cook
Green Leaf Products
P.O. Box 228
West Ossipee, NH 03890
Phone: (603) 323-7114
Email: GLP@nhland.com

Mark DeMaranville
6 Bryant Rd, PO Box 13
Cummington, MA 01026
Phone: (413) 634-5400
Email: phoenixantiquities@yahoo.com

David Dence
Gutchess Lumber Co
914 Niles School Road
Pownal, VT 05261
Phone: (802) 375-4272
Email: drdence@gutchess.com

Edward Denham
P.O. Box 440
West Stockbridge, MA 01266
Phone: (413) 323-4666

www.wildlandsandwoodlands.org

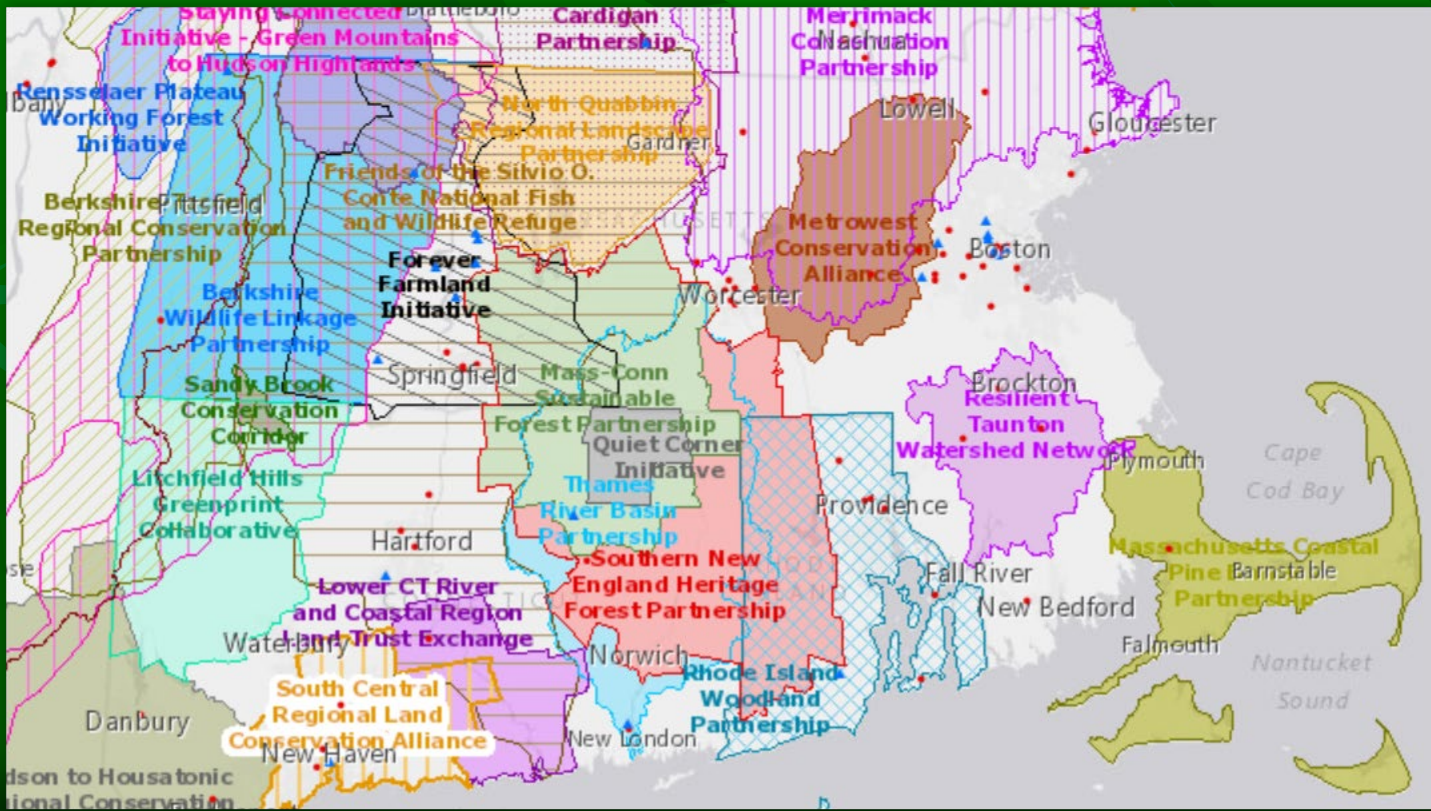


**Regional
Conservation
Partnership**
NETWORK



ALPINE

ACADEMICS FOR LAND PROTECTION IN NEW ENGLAND



Final Thoughts

- Don't get overwhelmed! You don't have to know all of the details of land prioritization or protection.
- There are people working in your community that can help.
- Don't forget your role. Focus on relationships!



**“Relegating conservation to government
is like relegating virtue to the Sabbath.
Turns over to professionals what should
be the daily work of amateurs”**

Aldo Leopold, 1935

