

# Who's at the Table?



*Managing Multiple Partners in OSRP  
Development and Implementation:  
A Town Case Study*

# Presenters

- **Dan Pereira**, *Director, Lincoln Parks and Recreation*
- **Patty Donahue**, *Lincoln Parks and Recreation & Lincoln Youth Soccer Board Member*
- **Geoff McGean**, *Executive Director, Rural Land Foundation and Lincoln Land Conservation Trust*

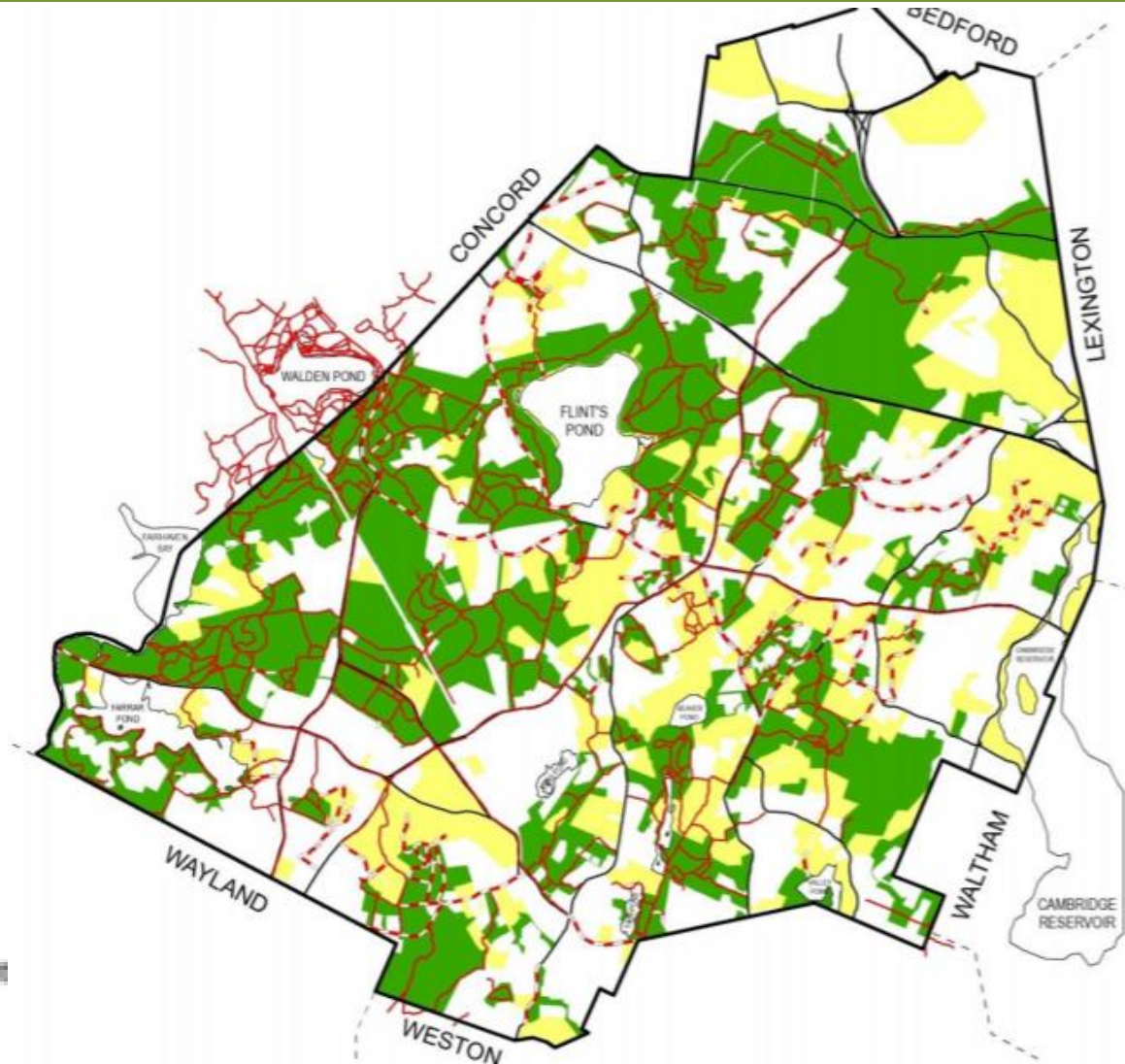




# Land of Open Space & Rec Interest

## LEGEND

- Existing Trails
- - - Proposed Trails
- Existing Protected Land
- Lands of Open Space and Recreation Int





# Lincoln's Conservation Legacy

**40% of Town in Open Space Protection**

**80 miles of connected tTrails**



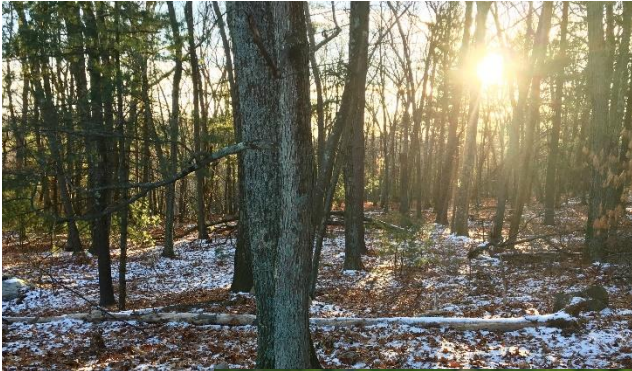
# Lincoln's Open Space Process

- Historically, Conservation Commission and RLF/LLCT at the table
- Only Lands of Conservation Interest identified
- Lands of Conservation Interest Aggressively Pursued





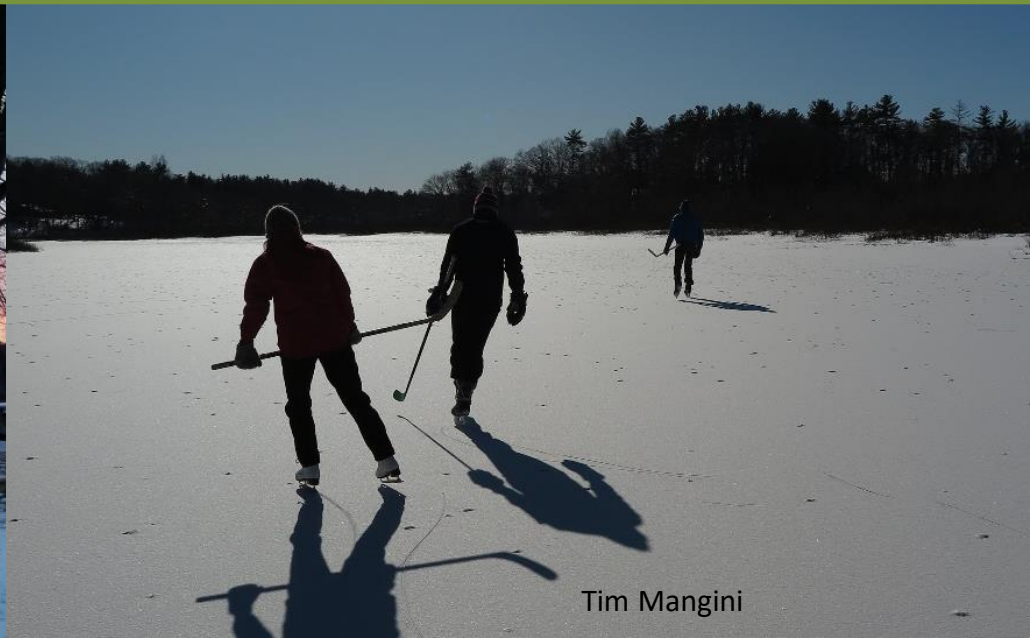
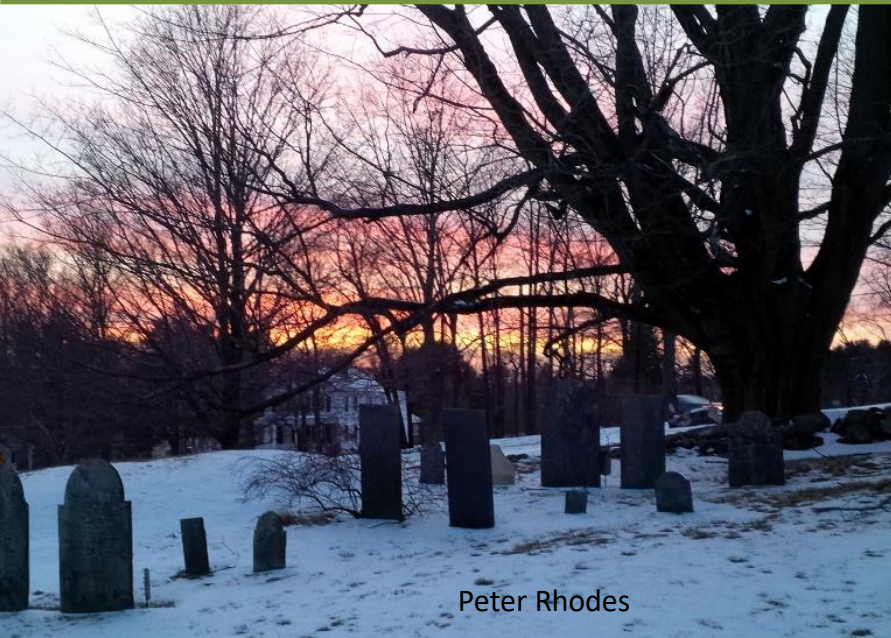
# Lincoln's Open Space Process 2017



- Shifting town demographics and interests
- Town priorities moving away from *only* Conservation

# Emerging Town Needs

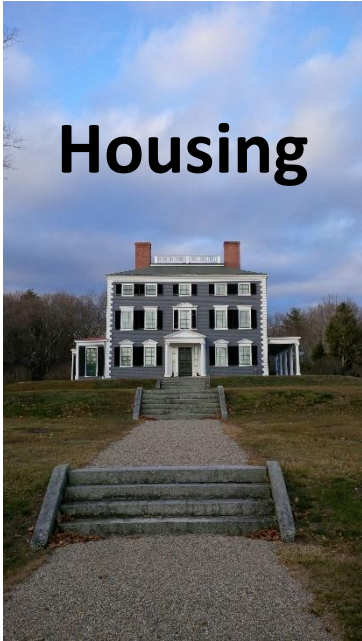
- Recreation, Housing, Water Supply, Cemetery
- Needed to adapt successful conservation model to other town priorities





# New Partners at the Table

**Housing**



**Agriculture**



**Cemetery**



**Water Supply**





# New Land Use Needs

- All groups represented at meetings
- Land use needs prioritized
- Overlapping interests identified



# Assessing New Lands

- Road map for assessing new lands
- Lands of conservation, housing, water supply, cemetery, and recreation interest identified





# Collaborative Effort

- New process resulted in collaborative effort
- Example: Critical piece of open space on the market
- Result: Protect open space while meeting other town needs/priorities



# Public/Private Partnership

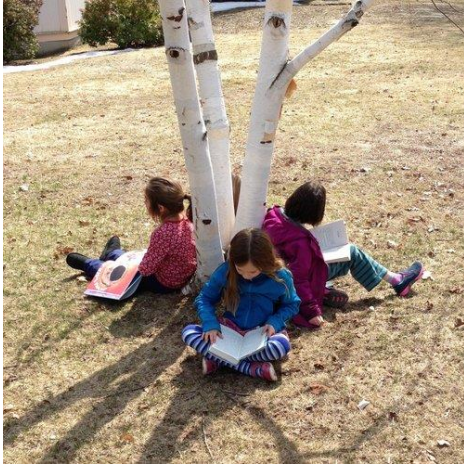
- Outside the box thinking
- Private organization & Town land use needs
- School provided essential funding & additional support



# Who's at the Table?



# Players at the Table: *Birches School*

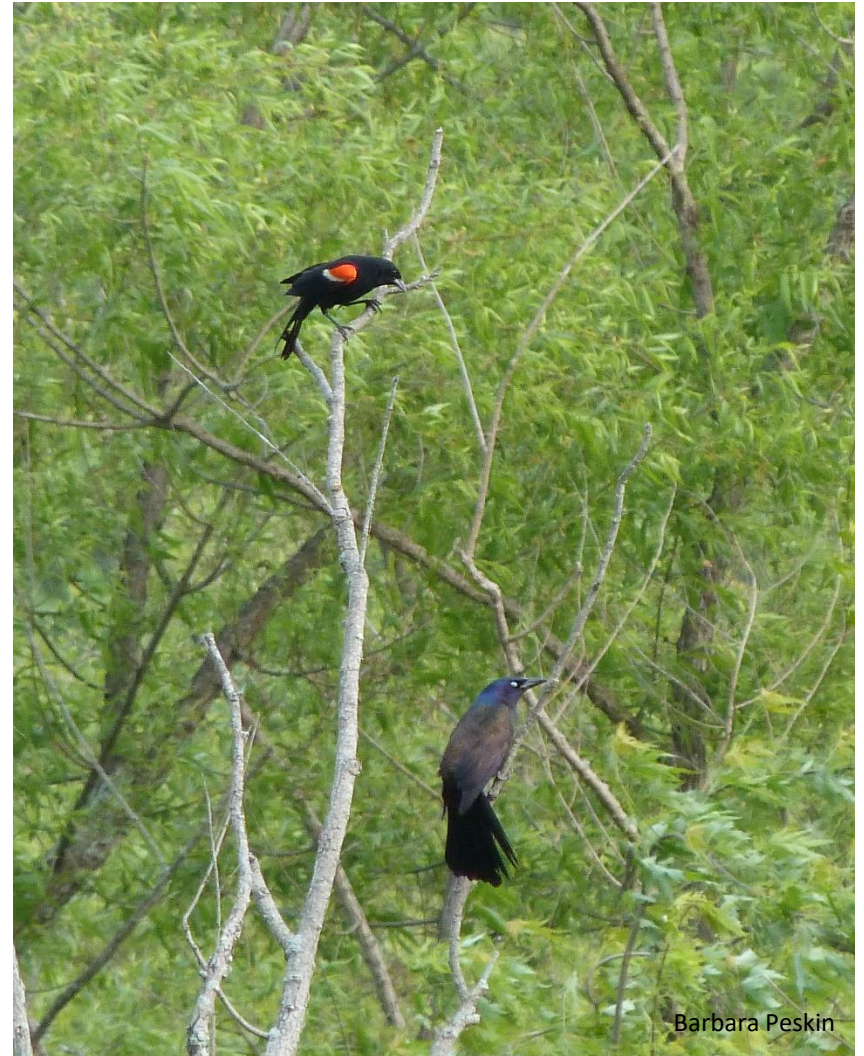


- Birches School—small nature-based, micro-school
- Operating out of the basement of a church
- Looking for more permanent space in Lincoln
- Brought them to the table as a possible partner for 100 Bedford Road property



# Benefits of a Private Partner

- Important financial partner
- Shared values
- Able to share infrastructure e.g., parking lot



# Players at the Table: *Parks & Rec*

- The Parks & Recreation Department provides affordable and diverse wellness opportunities, community-based special events, and **safe recreational facilities** to residents of all ages.
- Provide preschool, school age and adult programs and community events
- **Maintain Recreational Facilities**
  - Playgrounds
  - Public parks
  - Tennis courts
  - Multi-sport court
  - Codman pool
  - Athletic fields





# Strong Demand for Athletic Fields

## Schools

Phys-Ed classes  
Recess classrooms  
Field Days  
MS Cross Country  
MS Field Hockey  
MS Soccer  
MS Softball  
MS Baseball

## Community Groups

Parks & Rec Programs  
LEAP  
Fourth of July  
Public pool users  
Open use

## Youth Sports

Lincoln Youth Soccer  
LS Baseball  
LS Lacrosse  
Rugby  
Lincoln Soccer Club

## Adult Sports

Co-Ed softball  
Ultimate Frisbee  
Softball rentals



# Recognizing a Recreation Need

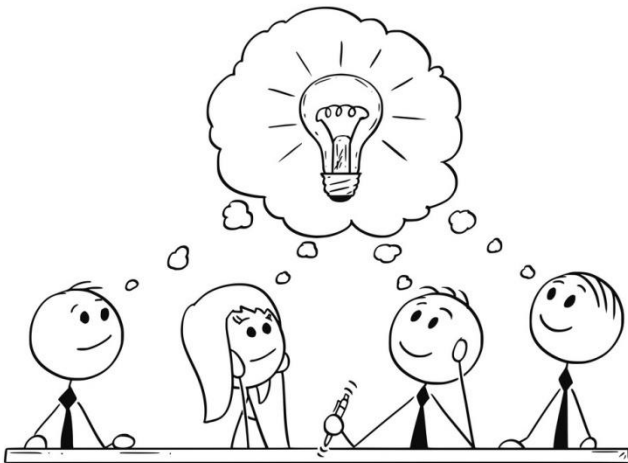
- Athletic fields are in hazardous condition
- Hard, rocky, weedy, fields increased risk of injuries
- Annual maintenance was not enough





# Raising the Profile of Your Need

- **The OSRP provided crucial documentation of our need**
- Parks & Rec had been looking for fields for more than 20 years, with very few opportunities
- Youth Soccer volunteers had also begun to recognize the need for a new field, increasing community conversation
  - A few sites were considered over the years, but none were suitable
  - **The OSRP made the right people aware of the need when the opportunity arose.**



# 100 Bedford Road Project

- 16-acre property owned by long-time Lincoln family
- With passing of landowner, land was coming on market quickly
- RLF approached family about working with town to preserve house and land



# Evaluating the Property

- Our new Open Space process allowed us to vet the property quickly for a variety of needs
- Best use for this site was determined to be for an athletic field, conservation, and school

# Partnership

- The Open Space process brought Conservation, Parks and Recreation, Lincoln Youth Soccer, and Birches School to the table and proposed the partnership



100 bedford road project



# 100 Bedford Road Project

## Unique Opportunity

Athletic field

Conservation land

Private School

## Partnership

Parks and Recreation

Conservation Commission

Rural Land Foundation

Birches School

# About the Property

- 16 acres / 12 acres to the town /
- Centrally located
- Accessible by vehicles and pedestrians
- Abuts existing conservation land
- Wooded, hilly, rocky terrain
- 3-4 potential housing lots





# About the Project



100 bedford road project



# About the Project





# Why Did We Get Support?

- Addresses needs / supports values identified in OSRP
- Investment for future generations
- Achieves multiple objectives
- Acknowledges wishes of the property owner
- Shared purchase/amenities reduces cost
- Unanimous support from town boards and committees
- No increase in property taxes due to CPA



# Valuable Lessons

- Wide-reaching participation, encourage “outside the box” thinking
- When possible, meet a variety of needs (sports, education, conservation, solar energy)
- Strong organizational capacity needed to manage increased participation. Our OSRP benefited from having one person manage the process.
- OSRP won’t work if it sits on a shelf—must be continuously reviewed
- Executive summaries are recommended





# Thank You

## Questions?

