

**SOUTHBOROUGH
OPEN SPACE
PRESERVATION
COMMISSION**

INTRO

A BRIEF OVER VIEW OF SOUTHBOROUGH

EVERY TOWN WILL HAVE UNIQUE
CHARACTERISTICS (AND CHARACTERS)

GETTING TO KNOW THE PLAYERS

WHAT'S YOUR CHARGE AND HOW TO USE IT?

**TO FACILITATE THE
PRESERVATION OF OPEN SPACE
IN SOUTHBOROUGH**

DOES YOUR TOWN HAVE CPA? DOES OPEN
SPACE HAVE A SEAT?
HOW LONG HAVE YOU BEEN ON YOUR OSC?

IS YOUR TOWN SUPPORTIVE OF OPEN SPACE
PROTECTION? RESIDENTS? TOWN OFFICIALS?

WHAT SHOULD BE
IN YOUR OSRP
THAT NO ONE
TOLD YOU ABOUT

LAND STEWARDSHIP PROJECTS



































**TIPS FOR CREATING
FORTUITOUS
PARTNERSHIPS WITH
UNEXPECTED BENEFITS**



DR. ROBERT GEGEAR

**HOW TO DAZZLE
THE PUBLIC AND
GARNER SUPPORT**















OUTSIDE-THE-BOX STRATEGIES FOR LAND PROTECTION

Southborough's Grand Compromise

St Mark's Golf Course



Save Our Heritage

No Development on the Golf Course

Article 4

St Mark's Golf Course



It's Not Just About GOLF









But Continuation of Golf Course is Important for Finances and to Preserve the Landscape





Heritage landscapes

Heritage landscapes are vital to the quality of life, character, and history of our communities.

Heritage landscapes embody connections between natural landscapes and human history and are often cited as special places that define the character of communities



History of St. Mark's Golf Course

- ▶ One of the Oldest Golf Courses in the Country
- ▶ Since 1897, George Peabody Gardner and his friends in Southborough - had used a tract of land between Latisquama and Cordaville Roads as a golf course
- ▶ In the spring of 1923 Gardner gave the property to St. Mark's and the school resolved to continue its maintenance as a golf course

Part of our town for 120 years



ARTICLE 15:

- To see if the Town will vote to raise and appropriate, transfer from available funds, or borrow a sum of money to fund necessary repairs and restoration to the St. Mark's Golf Course, as required by the Public Safety Facility construction in order to maintain continuity and playability of the course, or do or act anything in relation thereto.
- Proposed by: BOARD OF SELECTMEN Board of Selectmen
Recommendation: Support Advisory Committee Recommendation:
Support Summary:
- This article is necessary to fund golf course restoration and repair expenses, to ensure continuity of play during the construction of the Public Safety Facility.

ARTICLE 28:

- To see if the Town will appropriate \$50,000, with \$38,079 from the CPA Open Space Reserve Fund and \$11,921 from CPA FY19 Budgeted Reserve to fund the Golf Course Conservation Restriction Endowment and associated costs for the recording of the Conservation Restriction as requested by the Board of Selectmen. Said funds to be expended under the direction of the Community Preservation Committee and the Town Treasurer, or take any other action thereto.
- Proposed by: COMMUNITY PRESERVATION COMMITTEE Board of Selectmen
Recommendation: Support Advisory Committee Recommendation: Support
- Summary: Project proposed by the Board of Selectmen, this article uses the best estimates available to provide funds to cover the endowment and other associated costs to finalize the Conservation Restriction on the Southborough Golf Club as required by March 8, 2017 Town Meeting Vote to purchase the land.

ARTICLE 30:

- ARTICLE 30: To see if the Town will appropriate \$15,000 from the CPA FY19 Budgeted Reserve for the implementation of the Audubon International Classic Program at the Golf Course as proposed by the Golf Course Committee and the Open Space Preservation Commission. Said funds to be expended under the direction of the Community Preservation Committee and the Town Treasurer, or take any other action thereto.
- Proposed by: COMMUNITY PRESERVATION COMMITTEE Board of Selectmen Recommendation: Support Advisory Committee Recommendation: Support Summary:



**PUBLIC PROGRAMMING
TO EDUCATE AND
ENTERTAIN**

**MAKING LEMONADE
OUT OF LEMONS**

OPEN SPACE PRESERVATION COMMISSION

To Facilitate the
Preservation of
Open Space

OPEN SPACE PRESERVATION COMMISSION

Landscaping for Biodiversity

Our Yards Matter!



"If you have a backyard, this book is for you."

—Richard Louv, author of *Last Child in the Woods*

Bringing Nature Home

UPDATED AND EXPANDED

How You Can
Sustain Wildlife
with Native Plants

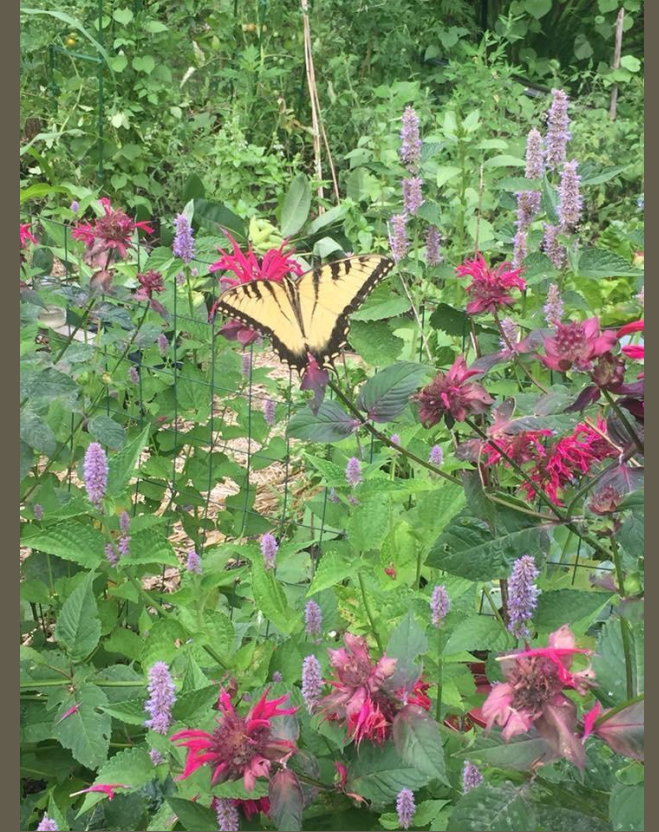
Douglas W. Tallamy

With a Foreword by Rick Darke

**OPEN SPACE PRESERVATION
COMMISSION**

**Native Pollinators
Native Plants
Initiative**

Native Plant Gardens of Southborough Face Book Group















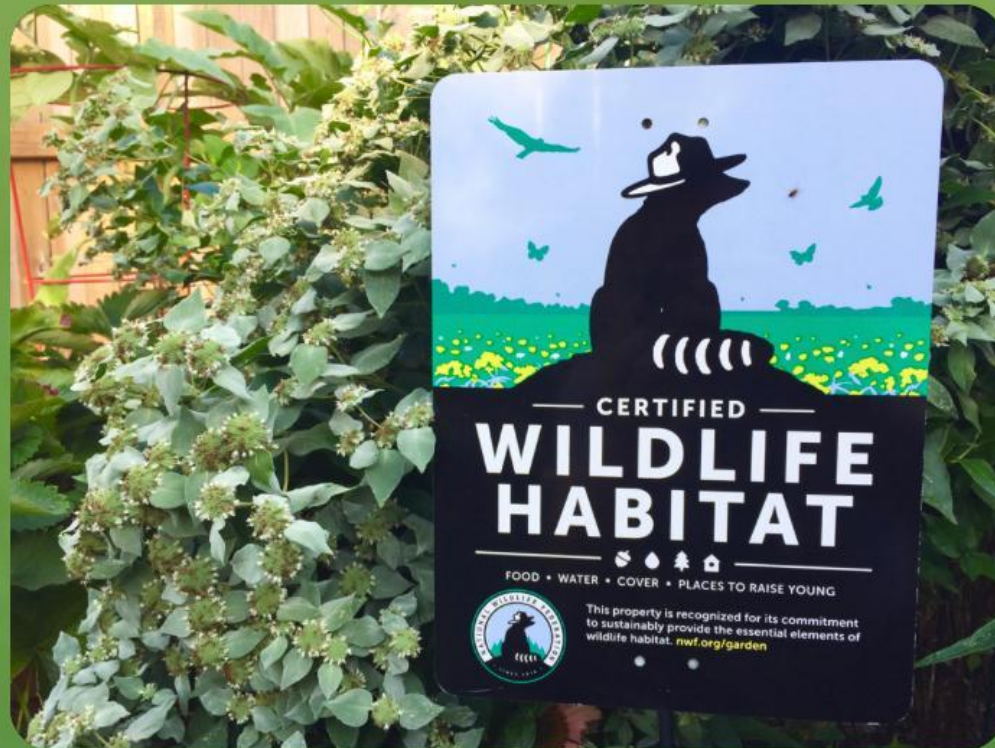


CERTIFIED WILDLIFE
HABITAT

CERTIFY NOW

LOG IN

Certify Your Habitat to Help Wildlife!



HOW TO USE YOUR ZONING CODE

**OPEN SPACE
PRESERVATION
COMMISSION**

**Presentation To
Planning Board**

**OPEN SPACE
PRESERVATION
COMMISSION**

**Native Pollinators
Native Plants
Initiative**

Why use native plants instead of non-native grass?

- **Beautiful**
- **Better for the local environment**
- **Cost efficient / Water Efficient**

Relevant Facts

- **54 percent of the land in the lower 48 states is made up of cities and suburbs,**
- **41 percent is made up of agriculture. We, as humans, have taken over 95 percent of nature.**
- **Lawns and exotic ornamental plants have taken over ecologically productive land.**
- **Lawns cover over 40 million acres in the United States**
- **Even modest increases in native plants in suburbs significantly increase the number and species of breeding birds.**
- **Native plants also help you use less water, as their deep root systems increase the soil's capacity to store water.**
- **Native plants significantly reduce water runoff and flooding.**

What's so bad about my lawn?

Fossil Fuels & Emissions

- Typical lawn mower running for one hour = 100 miles in a car
- Exxon Valdez – 10.8 million gallons oil spilled
- 17 million gallons gas spilled/year by homeowners
- Carbon and soil microbes

Source: thegreengrok http://blogs.nicholas.duke.edu/thegreengrok/lawns_stats/

Carex pensylvanica, Pennsylvania sedge



New England native

Height: 6-8"

Culture: part sun to full shade,
well-drained soils; drought
tolerant

Horticultural Interest:

stoloniferous, dense spreader,
can be mowed for a neater look





Phlox divaricata, wild blue phlox



New England native

Height: 12-14"

Culture: part sun to full shade,
moist, well-drained, rich soils;

Horticultural Interest: dense
spreader, fragrant mid-spring
blossoms, white-pink-blue







Why use native plants instead of non-native perennials?

- **Beautiful**
- **Better for the local environment**
- **Cost efficient / Water Efficient**







**FINDING FUNDING AND
GETTING PROJECTS
PASSED THROUGH
TOWN MEETING**

2019 ANNUAL TOWN MEETING

SOUTHBOROUGH
OPEN SPACE PRESERVATION COMMISSION

ARTICLE 24

PRESERVING ECOLOGICAL VALUES
AND
HERITAGE VIEWSCAPES



32 Cordaville Road

Stand of invasive
Tree- of-Heaven,
bait for the Spotted
Lanternfly

Spotted Lanternfly
Worst invasive
insect to reach American shores





The many stages and looks of the Spotted Lanternfly



Tree infested
with
Spotted
Lanternfly







Stand of invasive Japanese Knotweed obliterate view of heritage landscape and destroys ecological value of the land.



Knotweed's deep roots
dislodge stones of historic
stonewall



Knotweed causes
destruction of valuable,
historical stonewall



Removing invasives
restores ecological
value and protects
historic stonewall



HALLORAN
PROPERTY

SOUTHBOROUGH'S
NEWEST
CONSERVATION
LAND



Numerous stands of old growth heritage trees, and a number of existing cart paths dot the property.

The terrain is rolling with several streams, wetland areas and three (3) potential vernal pools.



Relatively invasive free,
but threatened with
Oriental Bittersweet
infestation at property
edges and invasive hot
spots in the Interior

WPI prof recruiting citizen scientists to study endangered bumblebees



 BUY

 HIDE CAPTION

WPI professor Robert J. Gegear takes to the fields to find out what interests bumblebees at the Breakneck Conservation area in Southboro. T&G Staff/Christine Peterson

After invasive removal Biologist and WPI Professor Dr. Robert Gegear will advise the OSPC on plants for habitat restoration for the rare *Bombus fervidus* bumblebee and other at risk pollinators



Endangered
Bumblebee,
Bombus
fervidus at
Breakneck Hill



2004
Breakneck Hill
Conservation Land
Bittersweet
infestation declared
worst in MetroWest!



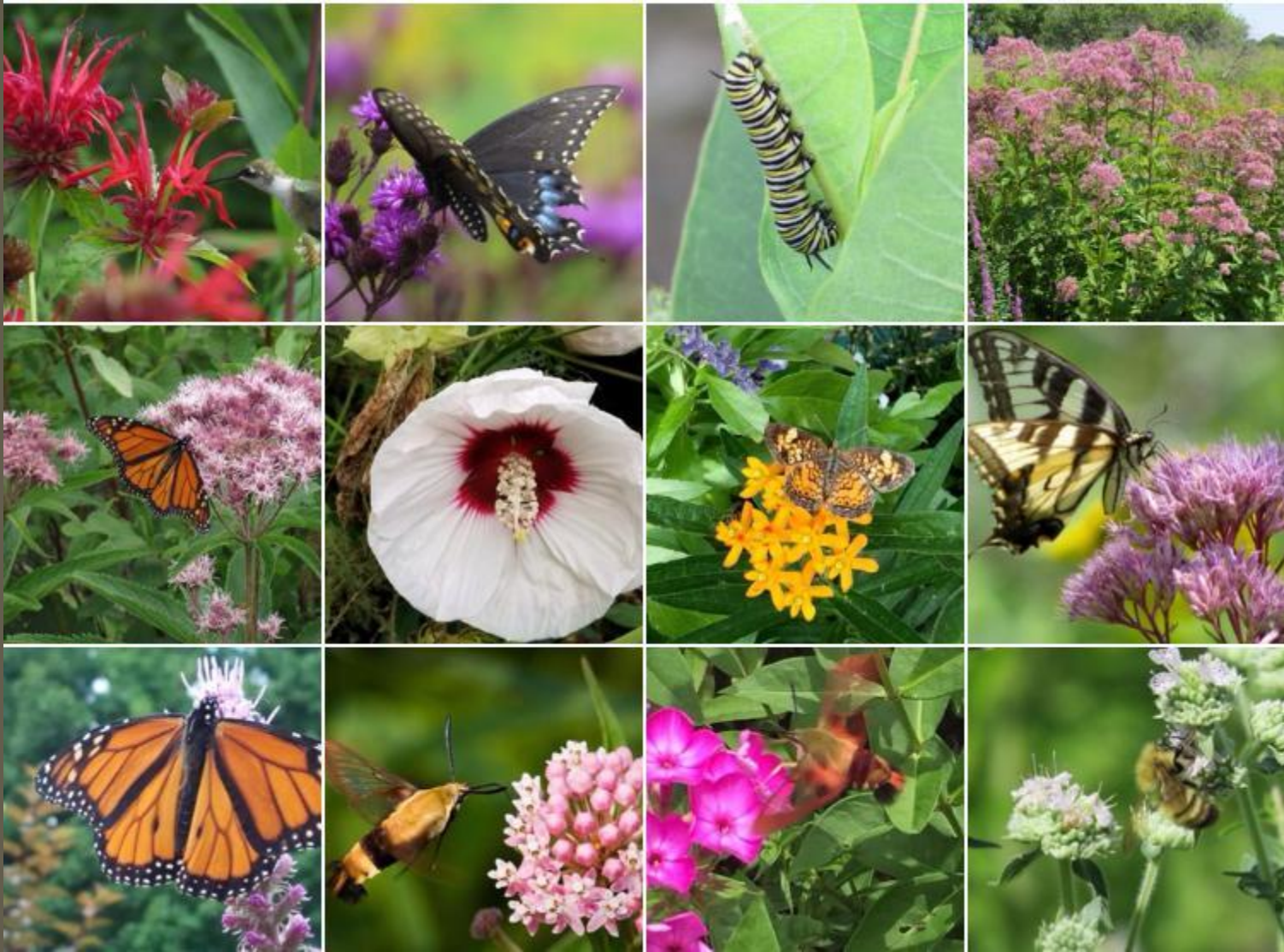


Breakneck Hill
now after
massive
restoration ...





Let's
Have
This...



And
This...

Not This...





Or This!

SOUTHBOROUGH
OPEN SPACE PRESERVATION
COMMISSION

WORKING TO KEEP OUR OPEN SPACES
HEALTHY AND BEAUTIFUL