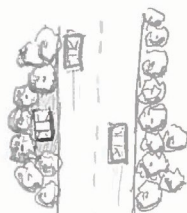


Trailhead Amenities DRAFT GUIDELINES

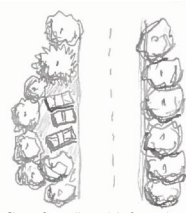
Matched to MA DCR trailhead classes

created by students of the Conway School of Landscape Design, Emmy Titcombe and Tamsin Flanders

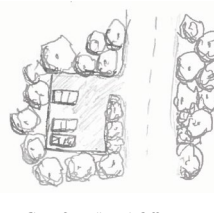
	Class 1	Class 2	Class 3	Class 4	Class 5
DCR Use Level	Low use	Low to moderate use	Moderate to high use	Very heavy use	Intensive use
DCR User Skill Level	Highly skilled	Medium to highly skilled	Intermediate skill	Minimal skill	Limited skill
DCR Maintenance interval	5 or more years	3-5 years	1-3 years	Annually	Weekly or as needed
Adequate off-street parking	Space for 0-3 cars. Informal road shoulder parking on low-use roads. Little to no parking surface improvement. No van access.	Space for 1-5 cars. Informal road shoulder parking on low - to - medium - use roads. May not have turn-around space. Little to no parking surface improvement. No van access.	Space for 5-10 cars. Off-street parking with turn-around space on medium - to - high - use roads. 2% - 5% slopes for parking area, 10% or less sloped driveway. Driveway wide enough for at least one car. Improved aggregate parking surface may be necessary to maintain site under heavy traffic. Van parking may be marked. Parking delineation may be considered.	Space for 10-20 cars. Off-street parking with turn-around space on medium-to-high-use roads. 2% to 5% slopes for parking area, 10% or less sloped driveway. Driveway wide enough for two cars. Improved aggregate parking surface to handle heavy traffic. Van parking may be marked. Parking lot delineated with fencing, hardscape, or vegetation.	Space for 20+ cars. Off-street parking with turn-around space. 2% - 5% slopes for parking area, 10% or less sloped driveway. Driveway wide enough for two cars. Parking area should be paved to accommodate intense traffic. Van accessible parking should be provided. Parking lot delineated with fencing, hardscape, or vegetation. Public bus access and turn-around may be appropriate.
Clear sight lines at parking entry and exit points	No	No	Yes; entrance visible from 50 feet away on road suggested.	Yes; entrance visible from 100 feet away on road suggested.	Yes; entrance visible from 200 feet away on road suggested.
Landscape Management	No	No	Vegetation around parking lot entry and exit should be managed 25 feet on each roadway from the intersection to maintain clear sight lines for vehicles.	Vegetation around parking lot entry and exit should be managed 25 feet on each roadway from the intersection to maintain clear sight lines for vehicles.	Vegetation around parking entry and exit should be managed 25 feet on each roadway from the intersection to maintain clear sight lines for vehicles. More comprehensive landscaping around parking lot and trailhead may be appropriate.
Clearly visible and defined trailhead entrance	Optional	Optional: 3 feet wide	Yes: 3 - 5 feet wide	Yes: 5 - 8 feet wide	Yes: 8 -15 feet wide. Bollards, gates, or other barriers may be considered to deter vehicular passage.
Signs	Possible blazes	Blazes. Local trail or property name should be considered.	Blazes and local trail or property name. NET sign and kiosk should be considered.	Kiosk. Blazes, local trail name, NET sign. Property name should be considered.	Kiosk. Blazes, local trail name, NET sign. Property or location name should be strongly considered.
Bike racks	No	No	May be appropriate depending on user-groups and on proximity to neighborhoods and regional rail-trails.	Should be considered. May be appropriate depending on user-groups and on proximity to neighborhoods and regional rail-trails.	Should be strongly considered. May be appropriate depending on user-groups and on proximity to neighborhoods and regional rail-trails.
Pedestrian road crossings	No	No	Should be considered when necessary.	Should be strongly considered when necessary.	Yes, when necessary
Seating/Picnic Area	No	No	Optional, should be shaded.	Optional, should be shaded.	Yes, should be shaded.
Trash Receptacles	No	No	No	No	Yes
Restrooms	No	No	No	No	Yes
Art Space	No	No	Possible	Possible	Possible
Maintenance	Same as trail maintenance level: 5 or more years.	Same as trail maintenance level: 3-5 years.	Same as trail maintenance level: 1-3 years.	Same as trail maintenance level: annually.	Same as trail maintenance level: weekly or as needed.



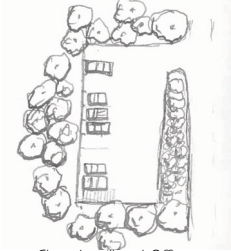
Class 1 trailhead. Informal pull-off parking for 0-1 cars.



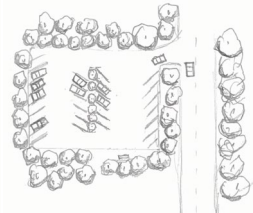
Class 2 trailhead. Informal pull-off parking for 1-5 cars.



Class 3 trailhead. Off-street parking for 5-10 cars.



Class 4 trailhead. Off-street parking for 10-20 cars.



Class 5 trailhead. Off-street parking for 20 or more cars.